

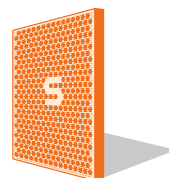
Schwank – Infrared-Heaters

primoSchwank

THE HEAT OF THE SUN

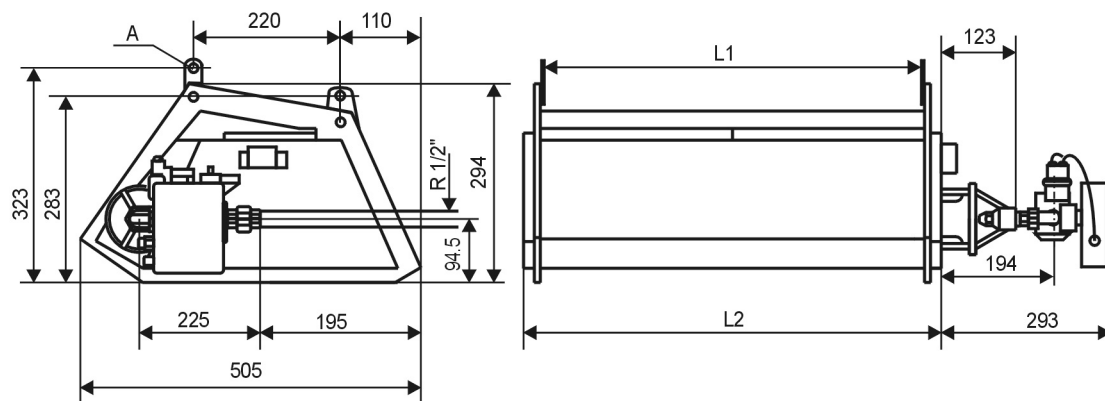


Schwank
INNOVATIVE HEATING SOLUTIONS

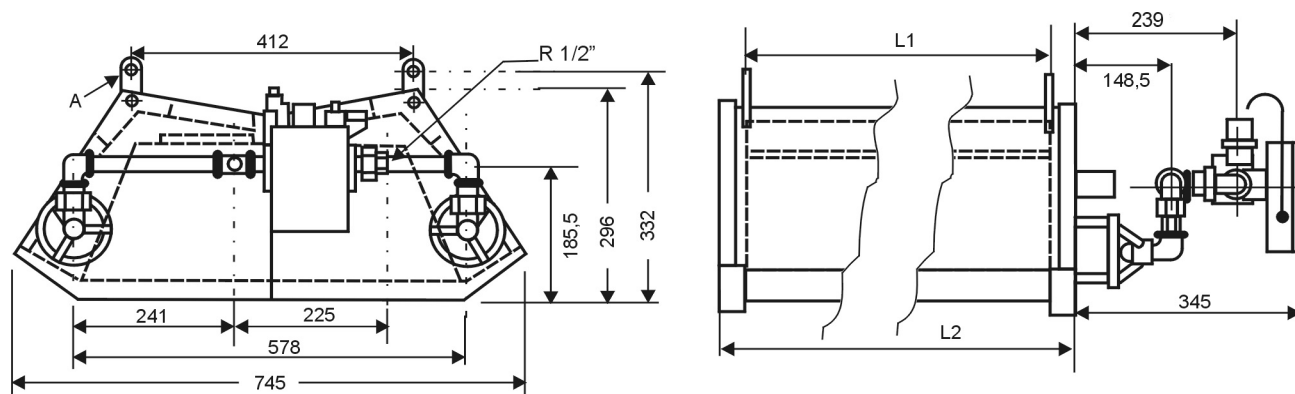


Dimensions and Technical Data

primoSchwank 10/15/20/30



primoSchwank 40



Heater Type	Gas	gas input [kW]	gas consumption 1)	weight appliance [kg]	weight control [kg]	length L2 [mm]	hanging points L1 [mm]
primoSchwank 10 CE-0085AU0374	Nat. gas H	10,7	0,97 m ³ /h	10,0	1,4	605	553
	Propane	10,7	0,76 kg/h	10,0	1,4	605	553
primoSchwank 15 CE-0085AU0374	Nat. gas H	16,0	1,45 m ³ /h	14,0	1,4	882	830
	Propane	16,0	1,13 kg/h	14,0	1,4	882	830
primoSchwank 20 CE-0085AU0374	Nat. gas H	21,3	1,95 m ³ /h	17,5	1,4	1160	1108
	Propane	21,3	1,52 kg/h	17,5	1,4	1160	1108
primoSchwank 30 CE-0085AU0374	Nat. gas H	32,0	2,92 m ³ /h	23,0	1,4	1714	1662
	Propane	32,0	2,28 kg/h	23,0	1,4	1714	1662
primoSchwank 40 CE-0085AU0374	Nat. gas H	42,6	3,90 m ³ /h	30,1	2,3	1157	1108
	Propane	42,6	3,01 kg/h	30,1	2,3	1157	1108

1) gas consumption: Nat. gas H: H_{sn} = 11,08 kWh/m³ Propane: H_{sn} = 14,3 kWh/kg

Application

appliance for industrial heating,
transfer of radiant heat is through infrared radiation

Min. Connection Pressure

single-stage control:	double-stage control:
Nat. gas H: 16 mbar	Nat. gas H: 30 mbar
Propane: 32 mbar	Propane: 65 mbar

Max. Connection Pressure

Nat. gas, Propane: 100 mbar

Electrical Connection

Single-phased AC 230 V, N, PE
50 Hz (ca. 33 VA)

Exhaust Flue

according to national standards

Gas Connection

threaded fitting R=1/2", female

Hanging Points

See 4 hanging points (A) at the drawing